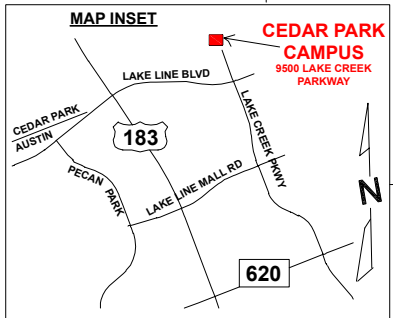
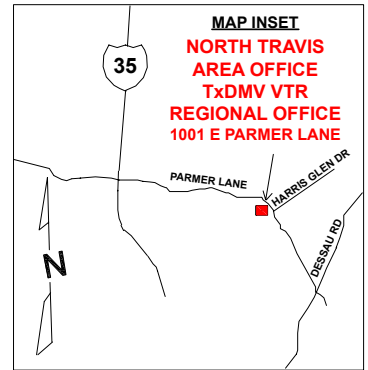


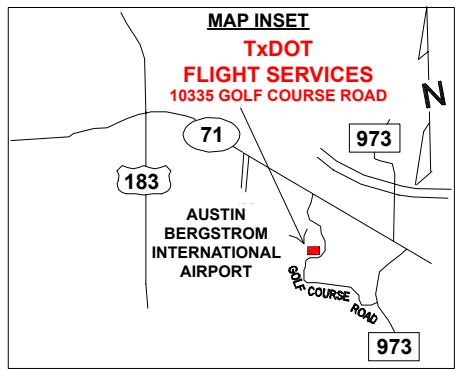
LOCATION MAP
Texas Dept of Transportation
Offices in Austin



24/7 SECURITY OPERATIONS
CAMP HUBBARD BLDG 4
3810 JACKSON AVE 465-7931
EMERGENCY 465-7357

ADDRESSES

ATTORNEY GENERAL
300 W 15TH 463-2004
AUSTIN DISTRICT OFFICE
7901 N I35 832-7000
BRAKER WAREHOUSE
2400 BRAKER LANE 465-7344
BULL CREEK CAMPUS
4205-4305 BULL CREEK ROAD
CAMP HUBBARD CAMPUS
3500-4000 JACKSON AVENUE
CEDAR PARK CAMPUS
9500 LAKE CREEK PARKWAY 506-5800
CENTIMETER WAREHOUSE
2000 A, B, C, D CENTIMETER CIR 836-8660
MAIN OFFICE BLDG
125 E 11TH ST 463-8585
NORTH TRAVIS AREA OFFICE & TxDMV VTR REGIONAL OFFICE
1001 E PARMER LANE 465-7445
PRINT SHOP
2000 B CENTIMETER CIR 374-5190
RIVERSIDE CAMPUS
118 E RIVERSIDE DR
150 E RIVERSIDE DR
200 E RIVERSIDE DR
TEXAS TURNPIKE AUTHORITY
100 CHEVY CHASE DRIVE 334-3800
TxTAG CUSTOMER SERVICE CENTER
12719 BURNET ROAD 1-888/468-9824
TxDOT FLIGHT SERVICES
10335 GOLF COURSE ROAD 936-8900



CAMP HUBBARD CAMPUS
SEE OTHER SIDE FOR DETAILS

BULL CREEK CAMPUS
SEE OTHER SIDE FOR DETAILS

ATTY GENERAL TRANSPORTATION DIVISION
300 W 15TH

MILEAGES

MAIN OFFICE TO CAMP HUBBARD 3.6 miles
RIVERSIDE TO CAMP HUBBARD 5.1 miles
RIVERSIDE TO MAIN OFFICE 1.2 miles
RIVERSIDE TO CEDAR PARK 18.9 miles
RIVERSIDE TO FLIGHT SERVICES 7.8 miles

STATE CAPITOL

CAPITAL VISITOR CENTER
11TH and BRAZOS
MAIN OFFICE BLDG
125 E 11TH

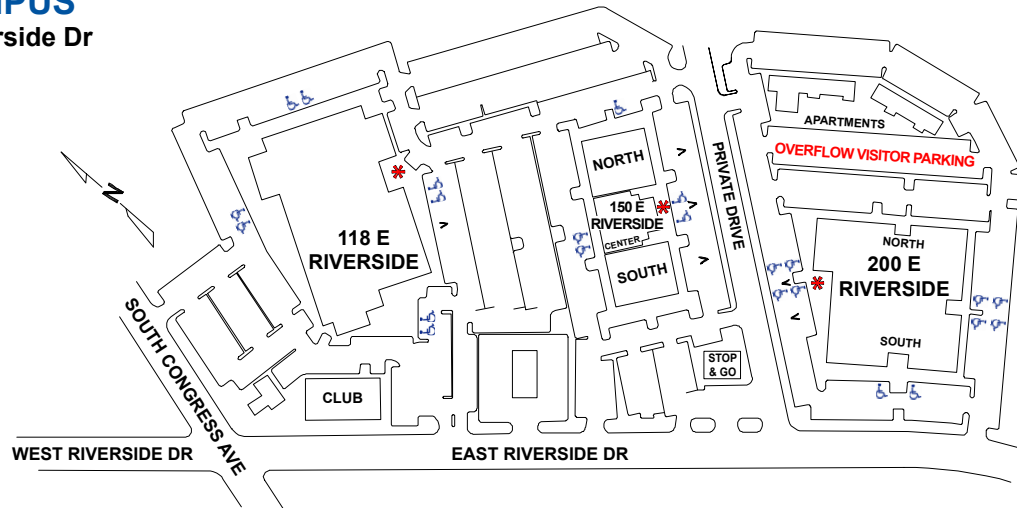
RIVERSIDE CAMPUS
SEE OTHER SIDE FOR DETAILS

CRASH RECORDS
1524 SOUTH I35

RIVERSIDE CAMPUS

118, 150, 200 East Riverside Dr
Austin, Texas

- * VISITOR ENTRANCES
- ♿ HANDICAP PARKING
- ▼ VISITOR PARKING



Building 118

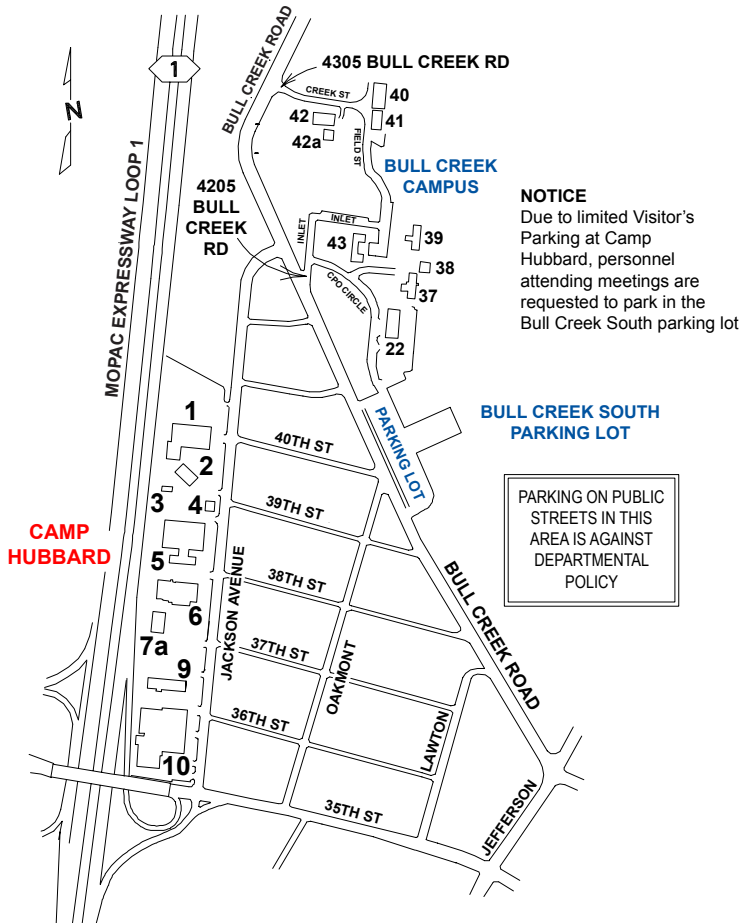
Bridge Division, Floor 2 **416-2183**
Design Division, Floors 1 & 2 **416-2584**
Environmental Affairs Division, Floors 1 & 3
416-3001
Rail Division, Floor 2 **486-5230**
Research & Tech Implementation Office, Floor 1
416-4730
Right of Way Division, Floor 1 **416-2901**
Traffic Operations Division, Floor 1 **416-3200**
Trans Planning and Programming Division, Floor 2
486-5000
Map Sales, Floor 1 **486-5014**

Building 150

Aviation Division, Floor 5 South **416-4500**
Finance Division, Floors 3 & 4 South **486-4500**
Govt & Public Affairs, International Relations, Floor 5 South
416-2036
Human Resources Division-Austin Central HR, Floor 1 South
416-4626
Maintenance Division, Floor 1 South, 1 North, 4 North, 5 North
418-3048
Occupational Safety Division, Floor 4 South **416-3385**
Tech Services Division-Data Center Floor 1 South **416-3363**
Texas Highways Magazine, Floor 1 **486-5858**
Travel Division, Floor 1 North & 2 North **486-5900**
TxDMV Motor Vehicle Division, Floor 2 South & 2 Center
416-4800

Building 200

Cafeteria, Floor 1 **416-2024**
Construction Division, Floor 2 South **416-2500**
General Services Division Reprographics Floor 1 **416-2566**
General Services Division Mall Operations **416-2132**
General Services Division Plans Online **416-2128**
General Services Division Web Services **416-2370**
General Services Division Online Manuals **416-2181**
General Services Division Electronic Publishing **416-2360**
Human Resources Division, Floor 1 South & 2 North **486-5300**
HRD/Employment Opportunities, Floor 2 North **416-2994**
HRD/Training, floor 1 South & Floor 2 North **486-5300**
Office of Civil Rights **486-5500**



CAMP HUBBARD CAMPUS

- | | |
|---------|--|
| Bldg 1 | TxDMV Auto Burglary and Theft Prevention Authority 374-5101
TxDMV Registration Title System 302-2020
TxDMV Vehicle Titles & Registration 465-7611
TxDOT Motor Carrier Division 465-3500 |
| Bldg 2 | Cafeteria 467-3896 |
| Bldg 3 | MNT - Building Maintenance 465-7356 |
| Bldg 4 | MNT - Security and Building Maintenance 465-7931 & 465-7356 |
| Bldg 5 | General Services Division 302-2400
Technology Services Division - Photo Lab 467-5917 |
| Bldg 6 | Technology Services Division 465-7394
Public Transportation Division 374-5230 |
| Bldg 7a | Central Plant |
| Bldg 9 | Storage |
| Bldg 10 | General Services Division - Shops/Warehouse 465-7364
General Service Division - Supply Center 465-3641 |

BULL CREEK CAMPUS

- | | |
|-------------|--|
| Bldg 22 | Motor Carrier Division- Central Permit Office 465-3500 |
| Bldg 37 | Const. Division- Pavement & Mat Systems 465-3674 |
| Bldg 38 | Const. Division- Pavement & Mat Systems 465-3674 |
| Bldg 39 | Const. Division - Pavement & Mat Systems 465-3674 |
| Bldg 40 | TxDMV Motor Carrier Division 465-3696
TxDOT Motor Carrier Division 465-3500 |
| Bldg 41 | Const. Division - Pavement Management Storage 465-4674 |
| Bldg 42,42a | Trans Planning & Programming Division 465-7545 |
| Bldg 43 | TxDMV Motor Carrier Division 465-3609
TxDOT Motor Carrier Division 465-3500 |